



**CATALOG
2017** /

20+ YEARS

CONTENTS

03 / Skid Steer Stump Grinders

05 / UltraGrinder

07 / MillerGrinder

09 / Tractor Stump Grinders

11 / MillerGrinder

12 / Specifications & Features

LEGEND



Skid Steers



Tractors

OF SHARP DESIGN & SOLUTIONS

ArborWolf® is a new forestry attachments specialist bred from two strong manufacturers:

SnowWolf®, manufacturer of professional-grade snow plows, pushers and blowers for machinery, renowned for their innovative design and durability since 1992.

Miller Machine Works, founded in 1996 by engineer Jeff Craft, purchased in 2015 by SnowWolf parent company WolfDesign, and rebranded as ArborWolf.

As customers far & wide tell us, Miller machines are simply the best designed and engineered, finest built and most heavy duty, reliable, productive, and profitable stump grinders they have ever used.

In line with our industry-leading reputation for customer care and service, we stand 100% behind our ArborWolf products and are happy to provide technical support and advice for your stump grinding operations. We are a family-owned business and a **live company**— if you need to talk to someone by phone, we are here for you, as we are for our dealers.

With over 20 years of experience with attachments for skid-steers, tractors and other machinery, we understand how product performance impacts business productivity.

Our goal at ArborWolf is to give you equipment that works for you in every sense of the word, and to give you an outstanding return on your investment.

Looking forward to working with you,

JERRY HOLMAN
President

MARK HOLMAN
General Manager

SKID STEER STUMP GRINDERS



UltraGrinder

PAGE 05

THE ATTACHMENT STYLE SKID STEER STUMP GRINDER FOR LOW- AND HIGH FLOW MACHINES WITH 16-45 GPM



Skid Steers



MillerGrinder

PAGE 07

THE ULTIMATE HIGH-FLOW SKID STEER STUMP GRINDER FOR MACHINES WITH 30-45 GPM



Skid Steers

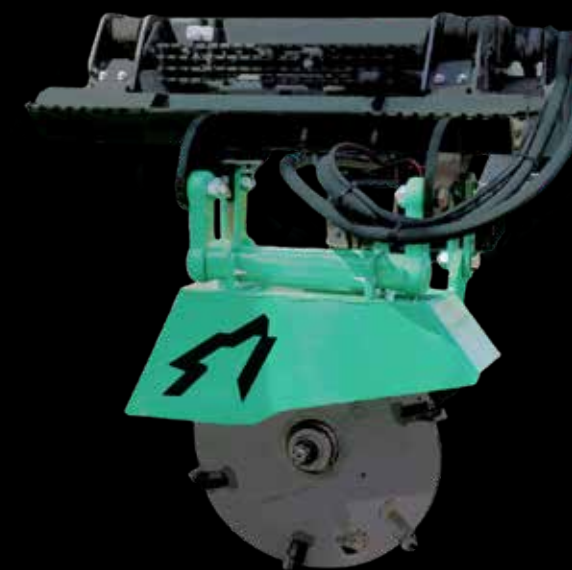


“Wow, I received the stump grinder a couple days ago, was immediately very impressed. A lot of machine for the money. It was as good or better than was represented. I ground some stumps here around the house to test it out, and it works excellent. I’m extremely satisfied, and just called to report, and order some spare cutter teeth.”

– Kirk, Landscape and Tree Service: Mohnton, PA

UltraGrinder

Finally, an attachment-style stump grinder that delivers the productivity of dedicated machines but costs four to five times less. The UltraGrinder is the only stump grinder in the industry with a cushioned parallelogram mechanism for drivetrain protection and dual-direction cutting. It also features a radial piston motor for maximum productivity and proven Greenteeth® technology. The attachment delivers high-efficiency grinding on mini skid steers, mini excavators and both high- and low-flow skid steers, and it’s ideal for tree companies, landscapers, agricultural producers and rental companies.



RADIAL PISTON MOTOR

The motor converts hydraulic pressure into torque with 92-95% efficiency compared to around 60% for other motors, doing for grinders what twin turbos do for a truck!



PLUG-N-GRIND SIMPLICITY

If you can run a skid steer you can grind with an UltraGrinder. There are no auxiliary controls, harnesses or electrical systems; simply plug in three hoses and grind away.



DUAL DIRECTION CUTTING

With teeth on both sides of the cutting wheel, you can grind both forward and backward and dramatically increase your efficiency.



CUSHIONED PARALLELOGRAM MECHANISM

A patent-pending cushioned parallelogram mechanism provides 6.2” of cushion front to back. This alleviated pressure on the cutting wheel, protects the drivetrain and extends product lifecycle.



"I tell you...every nut grower farm could use one of these stump grinders. We have ground tons of almond stumps with ease and almond is not an easy wood to grind. We really have put the machine through it's paces, and had no problems with it in about four years. It's smooth, powerful, very productive, and easy on the tractor with the constant velocity joints, and well engineered drive line."

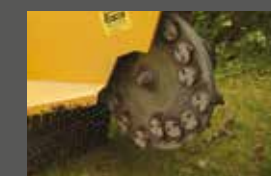
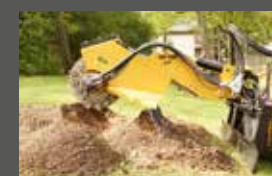
– Mike J., Almond Grower: Ft. Valley, GA



MillerGrinder Pro-75SS

The ultimate high-flow skid steer grinder. This hydraulic-driven attachment stump grinder is engineered for skid steers with high flow hydraulics (30-45 GPM). It is well suited to machines with 50 to 95 hydraulic HP.

The MillerGrinder Pro-75SS is designed to meet the needs of stump grinding contractors, tree service operations, lot clearing, moderate land clearing, farm use, parks and municipalities.



PATENTED 6-WAY (X-Y-Z) hydraulic positioning of the cutting blade: up/down, tele in/tele out & swing left/swing right. Anchor the grinder firmly on its backfill blade, hydraulically move the cutter and grind an average 36" stump without having to

reposition the machine, greatly increasing productivity and reducing lawn damage.

HIGH-SPEED RADIAL PISTON MOTOR
Capable of up to 45 GPM and 4,000 PSI. Super high efficiency cutting performance.

PERFECTLY WEIGHTED 1.25" BLANCHARD GROUNDWHEEL
Thickness with .01" parallelism and flatness tolerances. Eliminates bounce and runs true for very smooth cutting action without vibration.

SWING AND LIFT FUNCTIONS
Pivot on hardened 2.00" diameter pins with composite bushings. 60% greater wear surface (compared to typical 1.25" pins), enabling exceptionally long, maintenance-free service life.

TRACTOR STUMP GRINDERS



MillerGrinder

PAGE 11

THE ULTIMATE STUMP GRINDER
FOR 45 - 150 HP TRACTORS



Tractors



“Definitely the best return on investment of any equipment we’ve purchased for the farm. I only grind every once in awhile, but the machine has paid for itself many times over, and is a great part time income generator. Plus, I like the stump grinding process, and working with the customers. I have it on a 100 H.P. Case I.H. tractor. The Constant Velocity Driveline makes it very smooth, and less wear and tear on the tractor than say a bush hog mower. I have had it many years, and no failures...only teeth and pockets.”
 – Mike B., Farmer and Part Time Stump Grinder: Mulberry, IN

MillerGrinder PTO Series

The ultimate grinder for tractors with 45 to 150 HP. These PTO shaft-driven attachment stump grinders are designed to connect to tractors using a 3-point hitch. This series is ideal for serious stump grinding applications. Applications include stump grinding contractors, tree service operations, lot clearing, land clearing, farm use, parks and municipalities.



PATENTED 6-WAY (X-Y-Z) hydraulic positioning of the cutting blade: up/down, tele in/ tele out & swing left/swing right. Allows operator to anchor the grinder firmly on its backfill blade, hydraulically move the cutter and grind an average 36" stump without having to reposition the machine, greatly increasing

productivity and reducing lawn damage.



OVERSIZED CONSTANT VELOCITY PTO Driveline. Maximizes transmission of power from tractor to cutting wheel and provides smooth, long-lasting performance and dependability with less wear and tear on the tractor.

INTEGRAL BACKFILL BLADE Clean and level the site without changing attachments. Effectively contain chips for easy clean up.

PERFECTLY WEIGHTED Blanchard ground wheel with .01" parallelism and flatness tolerances. Eliminates bounce and runs true for smooth cutting without vibration.

SWING AND LIFT FUNCTIONS Pivot on hardened 2.00" diameter pins with composite bushings. 60% greater wear surface (compared to typical 1.25" pins), enabling exceptionally long, maintenance-free service life.

Skid Steer Stump Grinders Specifications

	UltraGrinder 						MillerGrinder 		
Model Number	ULTRA -1620	ULTRA -2024	ULTRA -2529	ULTRA -2933	ULTRA -3339	ULTRA -3945	PRO-75SS-2933	PRO-75SS-3339	PRO-75SS-3945
Requirements:									
Skid Steer Lifting Capacity (lbs.)	1,250	1,250	1,250	2,000	2,000	2,000	2,400	2,400	2,400
Hydraulic HP	28-56	35-56	43-67	50-77	70-91	68-105	55-77	70-91	68-105
Hydraulic Flow	16-20 GPM	20-24 GPM	25-29 GPM	29-33 GPM	33-39 GPM	39-45 GPM	29-33 GPM	33-39 GPM	39-45 GPM
Hydraulic Pressure	3,000-4,061 PSI	3,000-4,061 PSI	3,000-4,061 PSI	3,000-4,061 PSI	3,000-4,061 PSI	3,000-4,061 PSI	3,000-4,061 PSI	3,000-4,061 PSI	3,000-4,061 PSI
Case Drain	Yes	Yes	Yes	Yes	Yes	Yes	Yes	Yes	Yes
Product Data:									
Cutting Wheel Diameter	23"	23"	23"	23"	26"	26"	26"	26"	26"
Cutting Wheel Thickness	1.00"	1.00"	1.00"	1.00"	1.00"	1.00"	1.25"	1.25"	1.25"
Number of Teeth	24	24	24	30	30	30	32	32	32
Weight (lbs.)	640	640	640	640	640	640	1,640	1,640	1,640
Available Upgrades:									
6 Tooth Low Flow Wheel	YES	YES	YES	NO	NO	NO	NO	NO	NO
8 Tooth High Flow High Performance Wheel	NO	NO	NO	YES	YES	YES	YES	YES	YES
5 Hose Control Upgrade	NO	NO	NO	NO	NO	NO	YES	YES	YES
Universal Controller With Harness	NO	NO	NO	NO	NO	NO	YES	YES	YES


ACCESSORIES

Coupler Options: 1/2" Main Pair, 5/8" Main Pair, 3/4" Main Pair, 3/8" FM Case Drain, 3/8" M Case Drain

*Coupler Options Vary by Machine

*All low flow models include 1/2" Main Pair & 3/8" FM Case Drain

Tractor Stump Grinders Specifications

	MillerGrinder 		
Model Number	PRO-75T	PRO-100T	PRO-150T
Requirements:			
3-Point Lift Capacity (lbs.)	2,200	2,200	3,300
PTO RPM	540	1,000	1,000
PTO HP	45-90	60-110	90-150
Product Data:			
Cutting Wheel Diameter	26"	26"	30"
Cutting Wheel Thickness	1.25"	1.25"	1.5"
Number of Teeth	32	32	40
Weight (lbs.)	1,720	1,730	2,370

ADDITIONAL FEATURES

Very heavy unit weight with oversized components throughout. Heavy weight increases stability during cutting. True professional-grade quality with at least twice the durability of typical attachment-type grinders.

Oversize HD cast iron gear box with tapered roller bearings running in a sealed oil bath. Smooth operation and quiet running with excellent service life.

High durability carbide teeth made in the USA. Requires replacing less often, reducing maintenance costs.

Oversize components are engineered for optimal oil flow to keep oil temperatures low. Eliminates the need for an oil cooler and greatly increases the life of all hydraulic components.

AVAILABLE UPGRADES

High Performance 26" Alpine Rhino Wheel Upgrade for 75T & 100T Models

High Performance 30" Alpine Rhino Wheel Upgrade for 150T Model

ArborWolf®
by WolfDesign®

14311 Ewing Avenue
Burnsville, MN 55306

1 800.905.2265
T 952.224.5705
F 952.224.4444

info@arborwolf.com
arborwolf.com

**LEAD
YOUR
PACK**