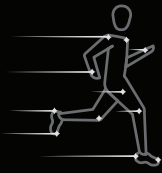


This panel folds in first



Brilliant® Reflective Strips are available in a variety of colors to blend in with or accent your apparel and equipment. Made from 3M™ Scotchlite™ Reflective Material, it provides optimal visibility in low-light conditions.



When you outline the human form with Brilliant Reflective, the light reflecting back to a driver will be in the shape of a human. Studies show that drivers react more quickly when they know they're approaching a human rather than an unknown object.



BRILLIANT

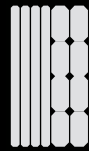


OUTDOOR PACK

REFLECTIVE STRIPS

STICK-ON

12 STRIPS



3M Scotchlite™
Reflective Material



BRILLIANT REFLECTIVE
IS PERFECT FOR:

	CLOTHING
	ATVS
	TREES
	BOATS
	DEER STANDS
	BACKPACKS
	WATER BOTTLES
	CAMEL BACKS
	BIKE PEDALS
	DOG LEASHES
	TACKLE BOXES

Brilliant Reflective is available as Iron-on or Stick-on applications. Iron-on strips are intended for clothing and as a permanent solution. Stick-on strips will stick to most anything and can be removed, but are made for a one time use.

See creative placement and uses at
www.BrilliantReflective.com

3.8125"

3.75"



OP0-V1

We Guarantee Our Products
www.BrilliantReflective.com/guarantee
Brilliant Reflective meets international
reflectivity standards EN13356 established by
the European Committee for Standardization.

MADE BY SAFE REFLECTIONS

3M and Scotchlite are trademarks of 3M, used under license in Canada.

OUTSIDE VIEW

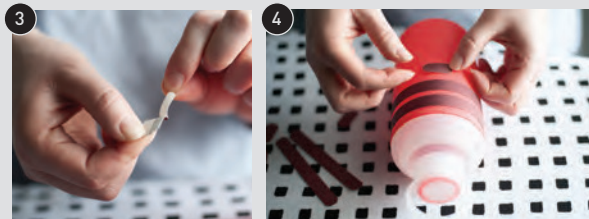


STICK-ON BRILLIANT® REFLECTIVE STRIPS

APPLICATION INSTRUCTIONS

1. Lay out your design. Separate your reflective strips and plan where the strips should be placed following the Biomotion Placement Guide on the bottom flap of this insert.
2. Lay the garment on a flat surface and remove all wrinkles.
3. Peel off the backing of each reflective strip.
4. Apply each strip with firm pressure to your garment or equipment.
5. Repeat for all strips in the pack.

When applying, you can easily reposition if desired.



WARNINGS AND CAUTIONS

- Use caution when outside at night. Reflective material helps to increase your visibility—it does not make you safe.
- Your best offense is a good defense. Be alert at all times for oncoming traffic.
- Brilliant Color Reflective material contains small parts which may cause a choking hazard for small children.
- Brilliant Color Reflective products should not harm most fabrics but ALWAYS test a small area inside the garment before applying to the outside.

PLEASE READ THIS!

Your purchase and use of this Product is at your risk. The Company is not liable for any direct, incidental, consequential, indirect, or punitive damages arising out of your use of our products.

THE PRODUCT IS PROVIDED ON AN "AS IS" BASIS WITHOUT WARRANTIES OF ANY KIND, EITHER EXPRESSED OR IMPLIED, INCLUDING WITHOUT LIMITATION WARRANTIES OF TITLE OR IMPLIED WARRANTIES OF MERCHANTABILITY OR FITNESS FOR A PARTICULAR PURPOSE. YOU ACKNOWLEDGE BY YOUR USE OF THE PRODUCT, THAT YOUR USE IS AT YOUR SOLE RISK, THAT YOU ASSUME FULL RESPONSIBILITY FOR ALL COSTS ASSOCIATED WITH THE USE OF THE PRODUCT, AND THAT THE COMPANY SHALL NOT BE LIABLE FOR ANY DAMAGES OF ANY KIND RELATED TO YOUR USE OF THE PRODUCT.

While we use reasonable efforts to include accurate and up-to-date information, we make no warranties or representations as to the accuracy of the information presented here. The Company assumes no liability or responsibility for any errors or omissions.

PATENT AND TM

Brilliant Reflective is a Safe Reflections, Inc. company. 3M and Scotchlite are Trademarks company. 3M and Scotchlite are Trademarks Canada. Brilliant is a Registered Trademark of Safe Reflections, Inc.

US Patent No.: 9,248,470 B2
German Patent No.: 21.2013.000.307.2
(other US and world-wide patent pending)



This panel folds in first



CARE INFORMATION

- Brilliant Stick-on is not intended to be a permanent reflective solution. If properly cared for, it will last a long time.
- Washing will shorten the life of Brilliant Stick-on adhesive.
- Always turn your garment inside out prior to washing.
- Always cool wash a garment with Brilliant Stick-on.
- Brilliant Stick-on products should not harm most fabrics but ALWAYS test a small area inside the garment before applying to the outside.

STICK-ON BRILLIANT® REFLECTIVE STRIPS

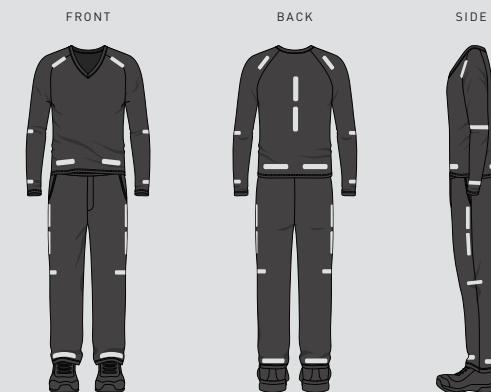
BIOMOTION PLACEMENT GUIDE

Proper placement of each strip of Brilliant® Reflective is important in order to maximize your visibility in low-light hours. Studies indicate that showing biomotion, recreating the human form with motion, will give an oncoming driver more time to react.

We've provided the most effective placement [below]. You can modify them based on your own garment or gear using the following rules.

To ensure you're creating biomotion, place reflective strips:

1. so that they are visible from all sides of your body.
2. on your head, shoulders, knees, elbows, hands/wrists and feet.



Use 360° of reflective placement to create biomotion and maximize nighttime visibility.

3.75"

3.8125"